



WELCOME TO HORTONS CREEK ELEMENTARY KINDERGARTEN!



- ★ Mics muted
- ★ Cameras OFF
- ★ Chat box will open at certain times

WELCOME & GROUNDING

Virtual Academy
&
In-Person families

**What is your child MOST
excited about for the upcoming
Kindergarten school year?**

*Post your comment in the
CHAT BOX.*



MEET THE ADMINISTRATORS



Sandy Chambers, Ed. D, Principal



Michael Parker West, Assistant Principal

MEET THE KINDERGARTEN TEACHERS!

Ms. Coakley



Mr. Boyce



Ms. Dickerson



Ms. Ferguson



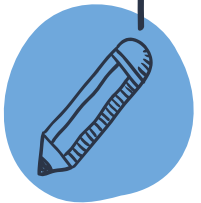
Ms. Griffin

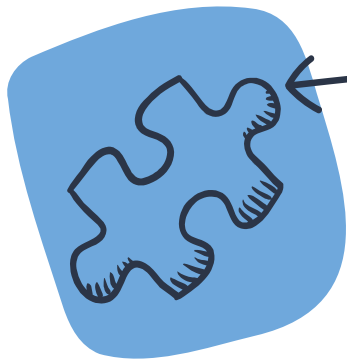


Ms. Hankinson



Ms. Ryan





MEET THE SCHOOL COUNSELORS



Alison Bowman

Nicki Lee

[Counselor Website](#)

STUDENT SUPPORT SERVICES

"The professional school counselor is concerned with the educational, academic, career, personal and social needs and encourages the maximum development of every student."

-From the American School Counselor Association (ASCA)

- Individual Counseling
(parent, teacher, or student referrals)
- Group Counseling
(variety of topics-social skills, divorce group, grief group, etc.)
- Classroom Guidance
(for all students; developmental in nature)



Please contact Alison Bowman or Nicki Lee if you have any questions or concerns regarding your child.

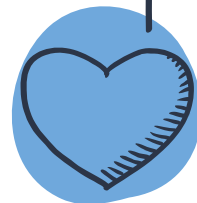
Ms. Bowman:

abowman@wcpss.net

@CounselorHCreek

Ms. Lee: nlee2@wcpss.net

@ms_nlee



MEET OUR PTA PRESIDENT MRS. MEGHAN SAUNDERS

president@hortonscreekpta.com



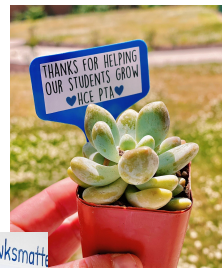
Find out more about us at hortonscreekpta.com
or join the Kinderhawk 2021-2022 FB Group

HORTONS CREEK PARENT TEACHER ASSOCIATION (PTA)

The overall purpose of the PTA is to make every child's potential a reality by engaging with and empowering families and the community to advocate for all children.

WHAT WE DO:

- Spiritwear!
- Spring Carnival
- Family Engagement Events/Nights
- No Hungry Hawks Community Service
- Support the school through enhancements & maintenance



EduKits

School supplies made simple -
order yours total at
<https://www.edukitinc.com/schools/11981/>

QUESTIONS?

POST "ME" IN THE CHAT AND WE'LL CALL ON YOU.



president@hortonscreekpta.com

WELCOME TO KINDERGARTEN!



Hortons Creek CREED



#HAWKSDOITDIFFERENT

I am innovative.

I am uniquely capable.

I have a voice that can create change.



#OTHERHAWKSMATTER

I take care of myself.

I take care of others.

I take care of our place.

#TOGETHERISBETTER

We value all people.

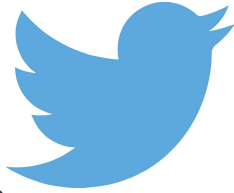
We believe relationships matter.

We believe relationships take work.

COMMUNICATION

1. WCPSS Website

www.wcpss.net

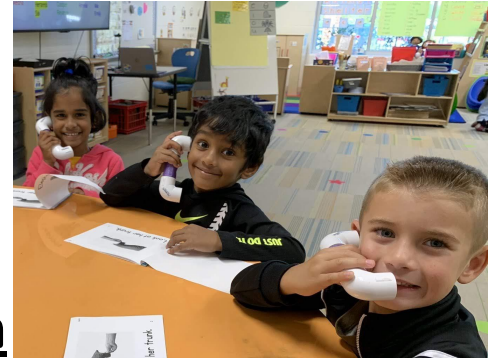


2. School Communication

- School [website](#)
- Weekly classroom newsletters
- Weekly principal messages posted on school website and emailed
- School [Facebook page](#)
- School & principal twitter handles
[@hortonscreekes](#) [@drsandychambers](#)

3. Classroom Communication

- Email/Website
- Classroom & teacher twitter handles
- Any concerns go to teacher first



WCPSS SCHOOL CALENDAR

Days of which to pay close attention:

- ★ Teacher workdays
- ★ Student vacation days
- ★ Student learning days
- ★ Holidays



July / julio 2021

| M/L | T/M | W/M | T/J | F/V |
|-----|-----|-----|-----|-----|
| | | | 1 | 2 |
| 5 | 6 | 7 | 8 | 9 |
| 12 | 13 | 14 | 15 | 16 |
| 19 | 20 | 21 | 22 | 23 |
| 26 | 27 | 28 | 29 | 30 |

October / octubre 2021

| M/L | T/M | W/M | T/J | F/V |
|-----|-----|-----|-----|-----|
| | | | | 1 |
| 4 | 5 | 6 | 7 | 8 |
| 11 | 12 | 13 | 14 | 15 |
| 18 | 19 | 20 | 21 | 22 |
| 25 | 26 | 27 | 28 | 29 |
| Q | | W | | |

January / enero 2022

| M/L | T/M | W/M | T/J | F/V |
|-----|-----|-----|-----|-----|
| 3 | 4 | 5 | 6 | 7 |
| 10 | 11 | 12 | 13 | 14 |
| 17 | 18 | 19 | 20 | 21 |
| 24 | 25 | 26 | 27 | 28 |
| 31 | | | | |

April / abril 2022

| M/L | T/M | W/M | T/J | F/V |
|-----|-----|-----|-----|-----|
| | | | | 1 |
| 4 | 5 | 6 | 7 | 8 |
| 11 | 12 | 13 | 14 | 15 |
| 18 | 19 | 20 | 21 | 22 |
| 25 | 26 | 27 | 28 | 29 |

August / agosto 2021

| M/L | T/M | W/M | T/J | F/V |
|-----|-----|-----|-----|-----|
| 2 | 3 | 4 | 5 | 6 |
| 9 | 10 | 11 | 12 | 13 |
| 16 | 17 | 18 | 19 | 20 |
| 23 | 24 | 25 | 26 | 27 |
| 30 | 31 | | | |

November / noviembre 2021

| M/L | T/M | W/M | T/J | F/V |
|-----|-----|-----|-----|-----|
| 1 | 2 | 3 | 4 | 5 |
| 8 | 9 | 10 | 11 | 12 |
| 15 | 16 | 17 | 18 | 19 |
| 22 | 23 | 24 | 25 | 26 |
| 29 | 30 | | | |

February / febrero 2022

| M/L | T/M | W/M | T/J | F/V |
|-----|-----|-----|-----|-----|
| | 1 | 2 | 3 | 4 |
| 7 | 8 | 9 | 10 | 11 |
| 14 | 15 | 16 | 17 | 18 |
| 21 | 22 | 23 | 24 | 25 |
| 28 | | | | |

May / mayo 2022

| M/L | T/M | W/M | T/J | F/V |
|-----|-----|-----|-----|-----|
| 2 | 3 | 4 | 5 | 6 |
| 9 | 10 | 11 | 12 | 13 |
| 16 | 17 | 18 | 19 | 20 |
| 23 | 24 | 25 | 26 | 27 |
| 30 | 31 | | | |

2021-2022 TRADITIONAL CALENDAR Calendario Tradicional

September / septiembre 2021

| M/L | T/M | W/M | T/J | F/V |
|-----|-----|-----|-----|-----|
| | | 1 | 2 | 3 |
| 6 | 7 | 8 | 9 | 10 |
| 13 | 14 | 15 | 16 | 17 |
| 20 | 21 | 22 | 23 | 24 |
| 27 | 28 | 29 | 30 | |

December / diciembre 2021

| M/L | T/M | W/M | T/J | F/V |
|-----|-----|-----|-----|-----|
| | | 1 | 2 | 3 |
| 6 | 7 | 8 | 9 | 10 |
| 13 | 14 | 15 | 16 | 17 |
| 20 | 21 | 22 | 23 | 24 |
| 27 | 28 | 29 | 30 | 31 |

March / marzo 2022

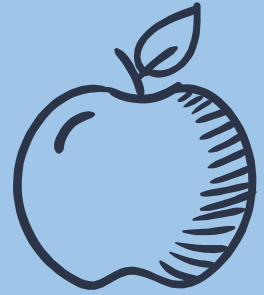
| M/L | T/M | W/M | T/J | F/V |
|-----|-----|-----|-----|-----|
| | 1 | 2 | 3 | 4 |
| 7 | 8 | 9 | 10 | 11 |
| 14 | 15 | 16 | 17 | 18 |
| 21 | 22 | 23 | 24 | 25 |
| 28 | 29 | 30 | 31 | |

June / junio 2022

| M/L | T/M | W/M | T/J | F/V |
|-----|-----|-----|-----|-----|
| | | 1 | 2 | 3 |
| 6 | 7 | 8 | 9 | 10 |
| 13 | 14 | 15 | 16 | 17 |
| 20 | 21 | 22 | 23 | 24 |
| 27 | 28 | 29 | 30 | |

2021-2022 Traditional Calendar

WCPSS HEALTH CARE



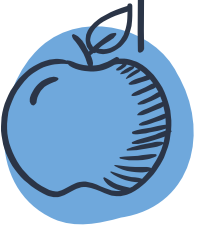
- ★ In Wake County nurses are on site 2-3 days per week in each school
- ★ Contact the school nurse for:
 - Chronic illness, diabetes, asthma, severe allergies, seizures, etc.
- ★ Children requiring medication to be given on campus (inhaler, EpiPen, etc.) must have a completed Physician's Order (Form 1702) to sign in with medication. Form 1702 is available in front office and online.
- ★ Contact the nurse to set up a medical plan if your child needs accommodations due to medical conditions BEFORE school starts.
- ★ It takes time to set up these plans and they cannot be put into place on campus until they are set up formally. Please arrange this before your child starts school.
- ★ Hortons Creek School Nurse- Ceci Callahan ccallahan@wcpss.net 919-524-6639

SCHOOL ABSENCES

CHILDREN SHOULD STAY HOME WITH....

- Fever of 100 or higher
- Nausea, vomiting, diarrhea
- Severe headache
- Red, watery eyes with yellow drainage
- Undiagnosed rash
- Positive COVID-19 test

*Visit the [WCPSS website](#) for the most current information about when to keep a child home and Covid-19 Guidance.



TRANSPORTATION

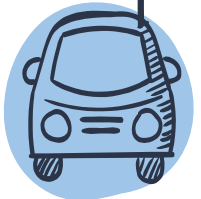
ARRIVAL OPTIONS

- Car
- Bus
- YMCA morning care
- Walkers*
- Bike riders*



DISMISSAL OPTIONS

- Car
- Bus
- YMCA after school care
- Walkers*
- Bike riders*





WCPSS MEALS

My School Bucks

For the 2021-22 school year, meals are free for all children.



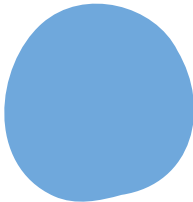
<https://www.wcpss.net/school-meals>



| All Students need: | |
|--|--------------------------------|
| Backpack and Lunch Box | 2 plastic folders (red & blue) |
| Change of Clothes | 1 box no.2 pencils |
| 2 packs multicultural crayons | 2 Mead Primary Journals |
| 1 boxes of crayons (24 pack) 1 pack markers | Blunt-tip child scissors |
| 6 Glue Sticks | Over the Ear Headphones |

Our Community Could Use:

Clorox wipes - baby wipes - snack size ziploc bags - sandwich size ziploc bags
- gallon size ziploc bags - jumbo size ziploc bags - hand sanitizer - tissues -
white cardstock - multi-colored cardstock - colored paper - painters tape





TYPICAL KINDERGARTEN DAY

We will have Purposeful Play.

We will have Morning Meeting.

We will have Math.

We will go to Lunch.

We will have Reading.

We will go to Recess.

We will have Letterland.

We will have Writing.

We will have Snack.

We will go to Specials.

We will have Social Studies.

We will have Closing Circle.

STAGGERED ENTRY & MEET THE TEACHER

Staggered Entry - First week of school

This is a half day of school for
1 day.

Items to bring:

- lunchbox/water bottle
- backpack
- small, healthy snack

*Please make sure to meet with our school nurse before this date to arrange for any medication needed at school (if needed).



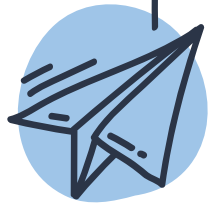
Meet the Teacher

Items to bring:

- Information about how your child will get home on the first day of school and subsequent days (normal dismissal routine)
- School supplies
- This is a 1 hour Parent/Child meet-
NO SCHOOL

PREPARING FOR IN PERSON LEARNING

- Backpacks
- Lunch Boxes
- Snack
- *Independence*
- Excitement!



YMCA AT HORTONS CREEK

YMCA offers Before School and Afterschool every school day.

- 7 - 8:45 a.m.
- 3:45- 6:00 p.m.
- All programs are on a staff ratio of 1:10
- Flexible programming
- [Online registration](#)
- Keeping kids safe with WCPSS and DHHS
- Overseen by professional YMCA Directors and each program has CPR Certified Leadership staff.

More Questions?

Eliza.Cody@YMCATriangle.org

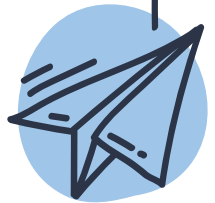
PROGRAMMING

- Character Development
- Active & Passive Games
- Arts & Crafts
- STEM Activities



THINGS TO NOTE...

- 2021-2022 school year
- Virtual Academy
- Classroom environment/one friend request
- Volunteers/visitors
- Tours
- Frequent early dismissal/logging off
- Communication (reading)
- Transportation changes (written only)
- Rewards





QUESTIONS?

POST "ME" IN THE CHAT AND
WE'LL CALL ON YOU.

THANK YOU!

Dr. Sandy Chambers,
Principal
schambers@wcpss.net

Mr. Michael Parker West,
Assistant Principal
mwest@wcpss.net

